

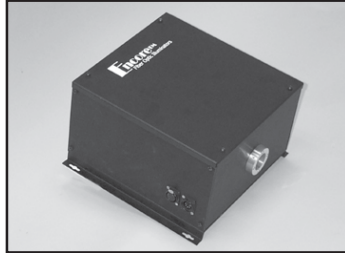
# ENCORE™ SERIES AR100 METAL HALIDE ILLUMINATORS

Project:

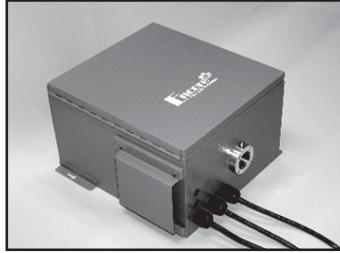
Type:

Catalog Number: **AR100**

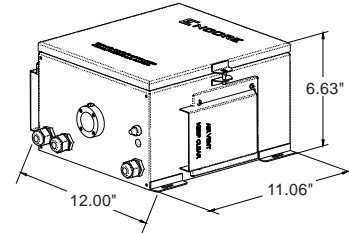
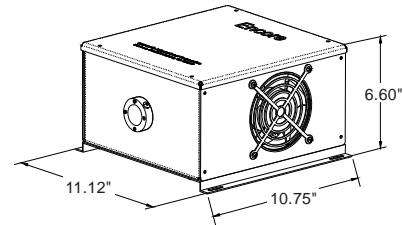
System Component: **Illuminator**



**DRY ENCLOSURE**



**WET ENCLOSURE**



**NOTE:** Drawings are not to scale

## SPECIFICATIONS

### Enclosure

Dimensions

Finish / Material

Shipping Weight

NEMA Rating

IP Rating

Number of Ports

### Power Requirements

Voltages

Starting Amps

Running Amps

Fuse

Listings

### Lamp

Type

Reflector

Wattage

Lumen Output

Color Temperature

Average Rated Lamp Life

Replacement PN

### Ventilation

Standard Fan

Ambient Operating Temperature

Mounting Clearance

### Harness

PS-HARN (Stranded)

AR-HARN (Large Core)

### Warranty

### Dry Enclosure

W: 11.12" (28.25cm)

L: 10.75" (27.3cm)

H: 6.60" (16.76cm)

Anodized Aluminum

9.0 Lbs (4.1Kg) Nominal

NEMA 1

IP20

1

Magnetic: 120V/60Hz, 240V/60Hz & 50Hz (120V/60Hz Standard Configuration)

Electronic: 120V/60Hz (Optional)

2.2 Amps @ 110V (Nominal) with standard magnetic transformer

1.4 Amps @ 110V (Nominal) with standard magnetic transformer

1.25in x .25in, 5.0 Amp, Fast Acting

ETL (Based on UL Standard 1598); CSA; CE Marked

Ushio MHR100, Metal Halide High Intensity Discharge

Dichroic Glass Module

100 Watt

1,608 at 1' (30.5cm) Test Fiber; 1,943 at Port (Electronic)

1,159 at 1' (30.5cm) Test Fiber; 1,476 at Port (Magnetic)

5200° K, 72 CRI

6,000 Hours

L9N-003

### Dry Enclosure

60 CFM Sealed Bearing Axial

-20°F (-29°C) to 110°F (43°C)

Minimum 12" between adjacent illuminators or other obstruction. If installed in an enclosed area with positive ventilation, a minimum of 4 cubic feet of surrounding airspace is required for each illuminator.

### Wet Enclosure

W: 12.00" (30.40cm)

L: 11.06" (28.04cm)

H: 6.63" (16.84cm)

Powder-Coated CRS

18.1 Lbs (8.2Kg) Nominal

NEMA 3R

IP44

1

### Wet Enclosure

117 CFM Sealed Bearing Axial

-20°F (-29°C) to 110°F (43°C)

# ENCORE™ SERIES AR100 METAL HALIDE ILLUMINATORS

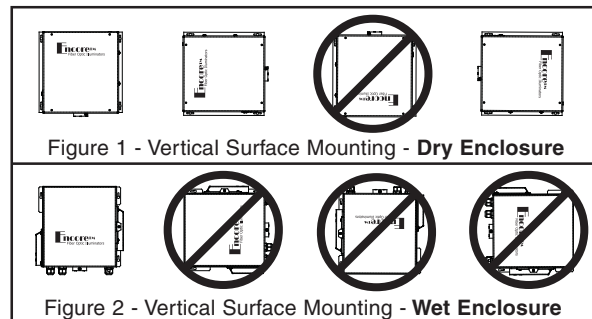
## PART NUMBER CONFIGURATION

SERIES	LAMP	VOLTAGE	ENCLOSURE	COLOR	CONTROL
AR100 Encore					
-5	100W, 5200° K, 72 CRI				
-120E	120V 60Hz Electronic Ballast				
-120M	120V 60Hz Magnetic Transformer				
-208M	208V 60Hz Magnetic Transformer				
-240/6M	240V 60Hz Magnetic Transformer				
-277M	277V 60Hz Magnetic Transformer				
-220M	220V 50Hz Magnetic Transformer				
-230M	230V 50Hz Magnetic Transformer				
-240/5M	240V 50Hz Magnetic Transformer				
-D	Dry				
-W	Wet				
-L	White Light Only				
-PC	Permanent Color Filter Only. Designate filter choice from any Encore standard color, custom color, CTO or CTB filter.				
-CW	Stoppable 8-Part Standard Color Wheel. Standard color sequence - Dark Orange, Dark Green, Magenta, Yellow, Medium Blue, White, Hot Pink, Aqua (Cyan).				
-C8	Stoppable 8-Part Custom Color Wheel. Designate colors and sequence from any Encore standard or custom color.				
-TW1	Twinkle Wheel for Large Core Fiber				
-TW2	Twinkle Wheel for PMMA Fiber				
-TWH	Hand Painted Twinkle Wheel				
-N	None				
-MAE	Mentor™ color speed control system: 7 preset speeds for 8-part standard or custom color wheels. Mentor™ Controller required.				
-D1D	DMX, Single Channel, White Light with Douser. DMX-CONTROL required.				
-D1C	DMX, Single Channel, 8-Part Standard or Custom Color Wheel. DMX-CONTROL required.				
-D2	DMX, Dual Channel, 8-Part Standard or Custom Color Wheel and Douser. DMX-CONTROL required.				

### EXAMPLE:

**AR100 - 5 - 120E - D - CW - D2**

SERIES \_\_\_\_\_  
 LAMP \_\_\_\_\_  
 VOLTAGE \_\_\_\_\_  
 CONTROL \_\_\_\_\_  
 COLOR \_\_\_\_\_  
 ENCLOSURE \_\_\_\_\_



## Notes

- 1) Encore Illuminators are air-cooled. Positive ventilation must be provided for proper operation. If installed in an enclosed area, a minimum of 4 cubic feet of surrounding airspace is required for each illuminator. A minimum of 12" mounting clearance is required between adjacent illuminators or other obstructions. DO NOT allow the air vents to become obstructed. Ventilation can be improved with the addition of the DUCT-AR kit, sold separately.
- 2) Relamping: Lamp is extremely hot to the touch. Allow sufficient time to cool before removal. Handle by reflector edges only. Damage to the lamp and/or reflector will occur from contamination by the natural oils on your hands.
- 3) Refer to Figures 1 & 2 above for proper mounting orientation on a wall or other vertical surface. The Dry Enclosure configuration may also be mounted on a shelf or other horizontal surface. The Wet Enclosure configuration is designed for vertical surface mounting only with the aperture and air vents pointing downward. DO NOT mount on a shelf or other horizontal surface.
- 4) Fiber(s) should exit illuminator straight for at least 18" before large bends. Splices to harness fiber must occur on STRAIGHT portions of fiber, not on bends.
- 5) Allow 2½ minutes to restore lamp to 95% output after turning unit off or after a power outage condition.
- 6) Dimming can be accomplished via DMX douser only, do not electrically dim by other methods.
- 7) Do not mount with aperture upward.
- 8) All specifications are subject to change without notice.